



Certificate of Analysis

Customer:
Ripple Organics
6255 Carrollton Ave. Suite 30798
Indianapolis, IN 46220

Sample ID: **220308066**
Order Number: **CB220308014**
Sample Name: **Delta 8 1200mg**

Collected Date:
Received Date: **11/08/2022**
COA Released: **11/10/2022**

External Sample ID:
Batch Number:
Product Type: **Concentrate**
Sample Type: **Concentrate**

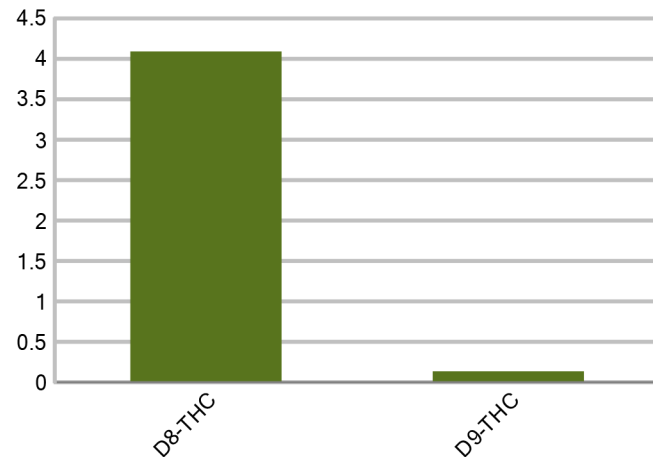
Comments:

CANNABINOID PROFILE

Analyte	LOQ (%)	% weight	mg/g
CBC	0.01	ND	ND
CBD	0.01	ND	ND
CBDa	0.01	ND	ND
CBDV	0.01	ND	ND
CBG	0.01	ND	ND
CBGa	0.01	ND	ND
CBN	0.01	ND	ND
d8-THC	0.01	4.091	40.91
d9-THC	0.01	0.136	1.362
THCa	0.01	ND	ND
Total Cannabinoids		4.227	42.27
Total Potential THC		0.136	1.362
Total Potential CBD		N/A	N/A
Total Potential CBG		N/A	N/A



Cannabinoids (% weight)



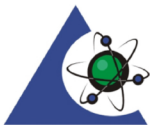
Ratio of Total Potential CBD to Total Potential THC **N/A**

Ratio of Total Potential CBG to Total Potential THC **N/A**

**Total Cannabinoids refers to the sum of all cannabinoids detected.*

**Total Potential CBD = (0.877 x CBDa) + CBD. *Total Potential THC = (0.877 x THCa) + THC. *Total Potential CBG = (0.877 x CBGa) + CBG.*

**Total Potential THC/CBD are calculated to take into account the loss of an acid group during decarboxylation.*



PJLA
Testing
Accreditation #109588

Authorized Signature

Laboratory Manager

Jamie Hobgood

11/10/2022 11:59 AM

DATE