



## Certificate of Analysis

**Customer:**  
Ripple Organics  
6255 Carrollton Ave. Suite 30798  
Indianapolis, IN 46220

Sample ID: **210308065**  
Order Number: **CB210308014**  
Sample Name: **CBN 100mg Starter Size**

Collected Date:  
Received Date: 09/27/2022  
COA Released: 09/29/2022

External Sample ID:  
Batch Number:  
Product Type: **Concentrate**  
Sample Type: **Concentrate**

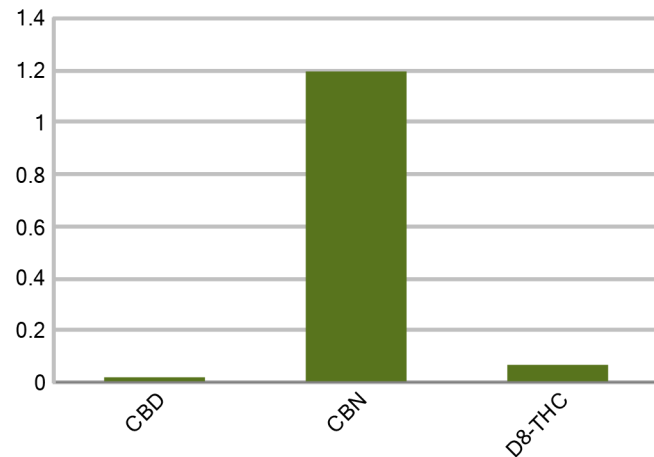
Comments:

### CANNABINOID PROFILE

Analyte	LOQ (%)	% weight	mg/g
CBC	0.01	ND	ND
CBD	0.01	0.019	0.193
CBDa	0.01	ND	ND
CBDV	0.01	ND	ND
CBG	0.01	ND	ND
CBGa	0.01	ND	ND
CBN	0.01	1.196	11.96
d8-THC	0.01	0.067	0.675
d9-THC	0.01	ND	ND
THCa	0.01	ND	ND
<b>Total Cannabinoids</b>		<b>1.283</b>	<b>12.83</b>
<b>Total Potential THC</b>		<b>N/A</b>	<b>N/A</b>
<b>Total Potential CBD</b>		<b>0.019</b>	<b>0.193</b>
<b>Total Potential CBG</b>		<b>N/A</b>	<b>N/A</b>



Cannabinoids (% weight)



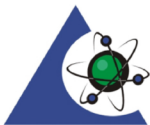
**Ratio of Total Potential CBD to Total Potential THC** N/A

**Ratio of Total Potential CBG to Total Potential THC** N/A

*\*Total Cannabinoids refers to the sum of all cannabinoids detected.*

*\*Total Potential CBD = (0.877 x CBDa) + CBD. \*Total Potential THC = (0.877 x THCa) + THC. \*Total Potential CBG = (0.877 x CBGa) + CBG.*

*\*Total Potential THC/CBD are calculated to take into account the loss of an acid group during decarboxylation.*



**PJLA**  
Testing  
Accreditation #109588

Authorized Signature

Jamie Hobgood

09/29/2022 11:58 AM

DATE