



CannaBusiness Laboratories, LLC

2554 Palumbo Dr. Lexington, KY 40509

Customer: Ripple Organics
6255 Carrollton Ave Suite 30798
Indianapolis, IN 46220

Sample Num:
Order Num:
Sample Name: CBD Oil - 1800mg

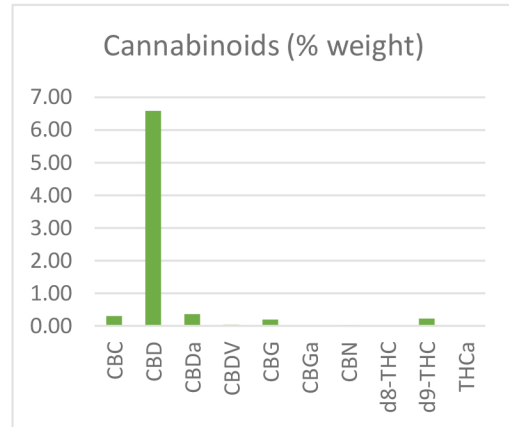
Collected Date:
Received Date: 01/11/2023
COA Released: 01/13/2023

External Sample ID:
Batch Number:
Product Type:
Sample Type: Other

Comments:

CANNABINOID PROFILE

Analyte	LOQ (%)	% weight	(mg/g)
CBC	0.01	0.30	2.99
CBD	0.01	6.59	65.87
CBDa	0.01	0.36	3.60
CBDV	0.01	0.04	0.37
CBG	0.01	0.20	1.97
CBGa	0.01	ND	ND
CBN	0.01	0.03	0.26
d8-THC	0.01	ND	ND
d9-THC	0.01	0.22	2.22
THCa	0.01	ND	ND
Total Cannabinoids		7.73 %	77.28 mg/g
Total Potential THC		0.22 %	2.22 mg/g
Total Potential CBD		6.90 %	69.03 mg/g



*Total Cannabinoids refers to the sum of all cannabinoids detected.

*Total Potential CBD = $(0.877 \times \text{CBDa}) + \text{CBD}$. *Total Potential THC = $(0.877 \times \text{THCa}) + \text{THC}$. *Total Potential CBG = $(0.878 \times \text{CBGa}) + \text{CBG}$.

*Total Potential THC/CBD are calculated to take into account the loss of an acid group during decarboxylation.

APPROVED BY

01/13/2023

DATE

This product has been tested by CannaBusiness Laboratories using validated testing methodologies. Values reported relate only to the product tested. CannaBusiness Laboratories makes no claims as to the efficacy, safety, or other risks associated with any detected or non-detected levels reported herein. This Certificate shall not be reproduced except in full, without the written permission of CannaBusiness Laboratories. Photo is of sample received by the lab and may vary from final packaging. The results apply to the sample as received.