



# CannaBusiness Laboratories, LLC

2554 Palumbo Dr. Lexington, KY 40509

**Customer:** Ripple Organics  
6255 Carrollton Ave Suite 30798  
Indianapolis, IN 46220

**Sample Num:**  
**Order Num:**  
**Sample Name:** Pet CBD Oil - 600mg

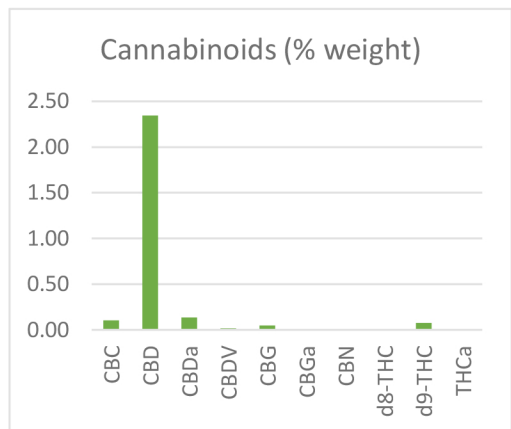
**Collected Date:**  
**Received Date:** 01/11/2023  
**COA Released:** 01/13/2023

**External Sample ID:**  
**Batch Number:**  
**Product Type:**  
**Sample Type:** Other


**Comments:**

## CANNABINOID PROFILE

Analyte	LOQ (%)	% weight	(mg/g)
CBC	0.01	0.10	1.03
CBD	0.01	2.34	23.44
CBDa	0.01	0.14	1.37
CBDV	0.01	0.02	0.15
CBG	0.01	0.05	0.49
CBGa	0.01	ND	ND
CBN	0.01	ND	ND
d8-THC	0.01	ND	ND
d9-THC	0.01	0.08	0.76
THCa	0.01	ND	ND
<b>Total Cannabinoids</b>		<b>2.72 %</b>	<b>27.24 mg/g</b>
<b>Total Potential THC</b>		<b>0.08 %</b>	<b>0.76 mg/g</b>
<b>Total Potential CBD</b>		<b>2.46 %</b>	<b>24.64 mg/g</b>



\*Total Cannabinoids refers to the sum of all cannabinoids detected.  
 \*Total Potential CBD = (0.877 x CBDa) + CBD. \*Total Potential THC = (0.877 x THCa) + THC. \*Total Potential CBG = (0.878 x CBGa) + CBG.  
 \*Total Potential THC/CBD are calculated to take into account the loss of an acid group during decarboxylation.



---

APPROVED BYDATE

01/13/2023