



CannaBusiness Laboratories, LLC

2554 Palumbo Dr. Lexington, KY 40509

Customer: Ripple Organics
6255 Carrollton Ave Suite 30798
Indianapolis, IN 46220

Sample Num:
Order Num:
Sample Name: CBD Oil - 600mg
Starter CBD Oil - 200mg

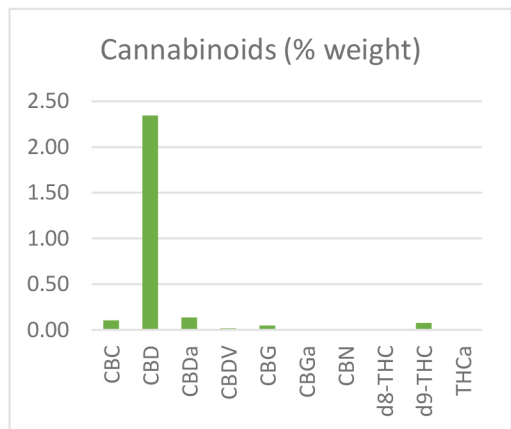
Collected Date:
Received Date: 01/11/2023
COA Released: 01/13/2023

External Sample ID:
Batch Number:
Product Type:
Sample Type: Other


Comments:

CANNABINOID PROFILE

Analyte	LOQ (%)	% weight	(mg/g)
CBC	0.01	0.10	1.03
CBD	0.01	2.34	23.44
CBDa	0.01	0.14	1.37
CBDV	0.01	0.02	0.15
CBG	0.01	0.05	0.49
CBGa	0.01	ND	ND
CBN	0.01	ND	ND
d8-THC	0.01	ND	ND
d9-THC	0.01	0.08	0.76
THCa	0.01	ND	ND
Total Cannabinoids		2.72 %	27.24 mg/g
Total Potential THC		0.08 %	0.76 mg/g
Total Potential CBD		2.46 %	24.64 mg/g



*Total Cannabinoids refers to the sum of all cannabinoids detected.
 *Total Potential CBD = (0.877 x CBDa) + CBD. *Total Potential THC = (0.877 x THCa) + THC. *Total Potential CBG = (0.878 x CBGa) + CBG.
 *Total Potential THC/CBD are calculated to take into account the loss of an acid group during decarboxylation.


 APPROVED BY _____ DATE 01/13/2023